

Container Reach Stacker (Fully Electric)

TERMINA *LIFT* TL-RS55E



5 Containers

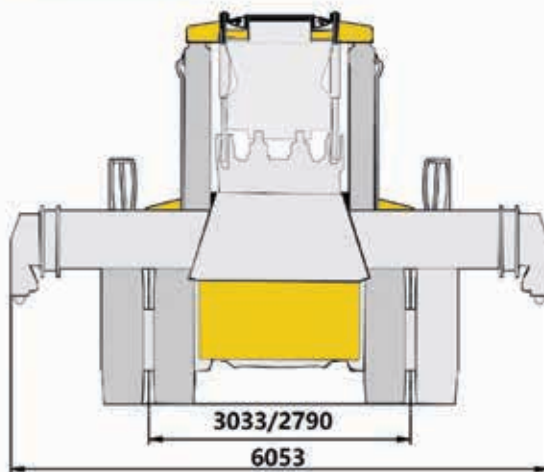
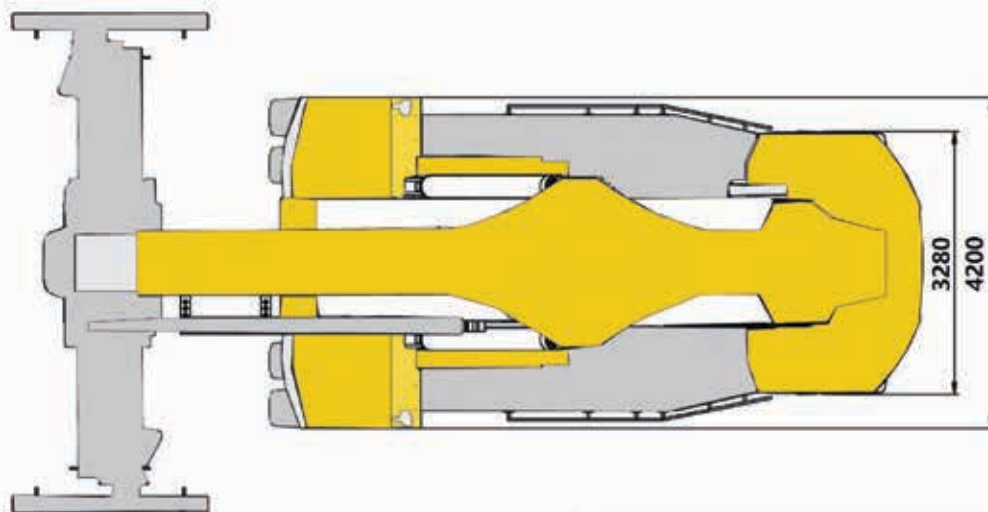
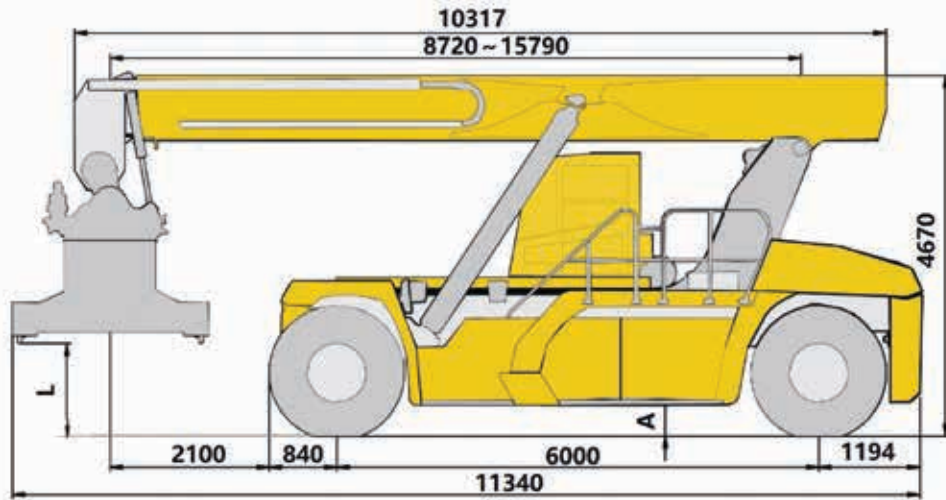


TERMINA *LIFT* — TL-RS55E

Contents

| Contents | Page |
|---------------------------------|------|
| Dimensions | 3 |
| Technical specifications | 4-5 |
| Weight / Working speeds | 6 |
| Lifting capacity | 7 |
| Dimensions of transported parts | 8-9 |
| Aisle width | 10 |
| Notes | 11 |

Dimensions



| Spreader | L | A |
|-------------|------|-----|
| Terminalift | 1200 | 350 |
| Bromma | 1155 | 350 |

Technical specifications

Standard equipment

The spreader is suitable for handling 20' and 40' standard containers. Telescoping, side shift and rotating function, as well as twist lock control are available.

Its maximum lifting capacity is 45 t, and side shift is +800 mm.

Full-view driver's cab.

Equipped with ergonomic seat, two point retractable seat belt, 24V power supply, radio and HD Reverse view system.

High-power, fully automatic heating and cooling air condition.

Permanent magnet synchronous electric motors and have advantages of large torque, high efficiency, low noise and maintenance-free.

Peak power : 346kW.

Peak torque : 3800 Nm.

Proven iron phosphate lithium battery, high energy density, long cycle life and good safety.

Voltage of battery pack: 618V.

Capacity of battery pack: 422 kWh.
by CATL

D102PL341 heavy duty drive axle, manufactured by German Kessler.

6 diagonal tires, Tire specifications: 18.00-25 40PR.

Service brake: wet disc brake, acting on the front wheels, and equipped with independent cooling tank, high performance filter and radiator.
Parking disc brake, acting on the front axle.

Equipped with full hydraulic power steering and easy to use.

America Parker variable plunger pump and valves, the system has compound action, vertical lifting and spreader anti-swing function.

Equipped with high performance filter and high power independent radiator.

618V high voltage system., proven BMS battery management system, Power sources of 220 V and 380 V are practicable. Stationary and mobile charging poles with different powers may be used, easy to use.

24V Can bus control system, two batteries, negative ground.

Driving lights: two headlights, two turning signals in front of the vehicle; two turning signals ,two brake lights and two reversing lights behind the vehicle.

Working lights: four working lights at the spreader locks, four working lights at the middle of the boom, two working lights behind the vehicle.

Warning lights: one rotating alarm lamp at the back of the vehicle.

Three-level insulation protection, real-time monitoring of electric leakage & active protection, current & voltage overload protection, smoke warning and automatic fire extinguishing, LMT, 2.5m long distance astern radar, one 2kg fire extinguisher.

Frame is made of fine grain high tension steel, with anti-torsion large cross-section, strong carrying capacity.

Finite element analysis and zero order design optimization method adopted for key structures ensure the strength and stiffness of structural members.

Two-stage, quadrangular telescopic boom, anti-torsion design, leading to better operating performance and anti-torsion ability.

Additional equipment

Bromma spreader is suitable for handling 20' and 40' standard containers. Telescoping, side shift and rotating function, as well as twist lock control are available.

Rated lifting capacity: 45 t.

Side shift: +800 mm.

Rotation angle: -105° ~ +195o.

Product parts list is as mentioned above, refer to the product quotation for specific parts.

Weight

| Item | Front Axle | Rear Axle | Total Weight | Tolerance |
|------------|------------|-----------|--------------|-----------|
| Unloaded | 34406kg | 36409kg | 70816kg | ±3% |
| Rated load | 99923kg | 15893kg | 115816kg | ±3% |

The axle loads listed in the table are the values when 45t Load located on the first row.

Working speeds

| Item | Unloaded | Rated load | Tolerance |
|-----------------|----------|------------|-----------|
| Lifting speed | 420mm/s | 250mm/s | ±10% |
| Lowering speed | 360mm/s | 360mm/s | ±10% |
| Traveling speed | 20km/h | 14km/h | ±10% |

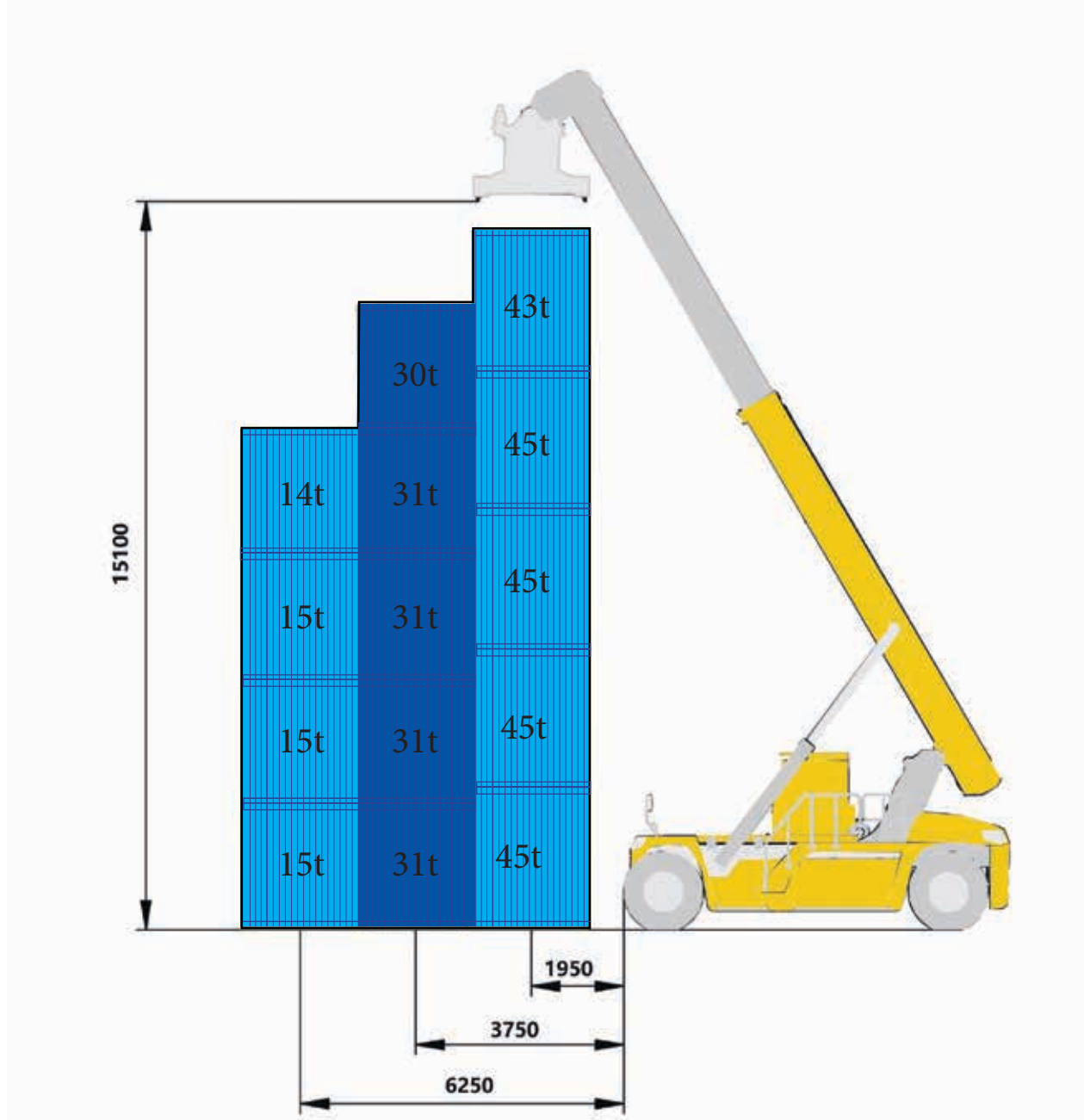
Spreader specifications

| Item | Terminalift Spreader | Bromma Spreader | Tolerance |
|------------------|-----------------------------|-----------------|-----------|
| Lifting capacity | 45000kg | 45000kg | ≥ |
| Side shift | ±800mm | ±800mm | ±1.5% |
| Telescoping time | Extend: 25s Retract: 11s | 15s | ±10% |
| Rotating time | 50S | 50s | ±10% |
| Shifting time | 15s | 15s | ±10% |
| Lock\unlock time | 1s | 1s | ±10% |

Power specifications

| Item | Parameter |
|--------------------------|-----------|
| Voltage of battery pack | 618V |
| Capacity of battery pack | 422kwh |
| Motor peak power | 346kw |
| Motor peak torque | 3800Nm |

Lifting capacities



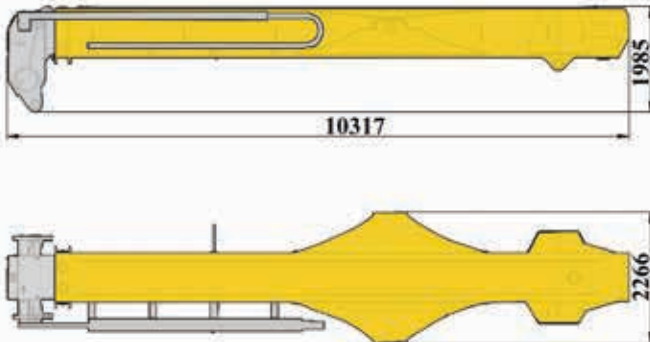
| Spreader | Max. Lifting Height | Max. Lifting Capacity | Number of Stacking |
|-------------|---------------------|-----------------------|-----------------------------|
| Terminalift | 15375mm | 45t | 5 (9'6")-5 (8'6") -4 (8'6") |
| Bromma | 15100mm | | |

Dimensions of transported parts

2

Boom assembly

Weight 13935kg
Qty 1



4

Counterweight A

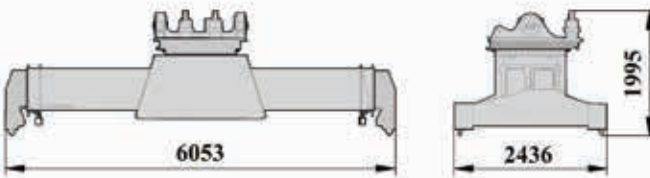
Weight 13.742kg
Qty 1



3

Spreader

Weight 8000kg
Qty 1



5

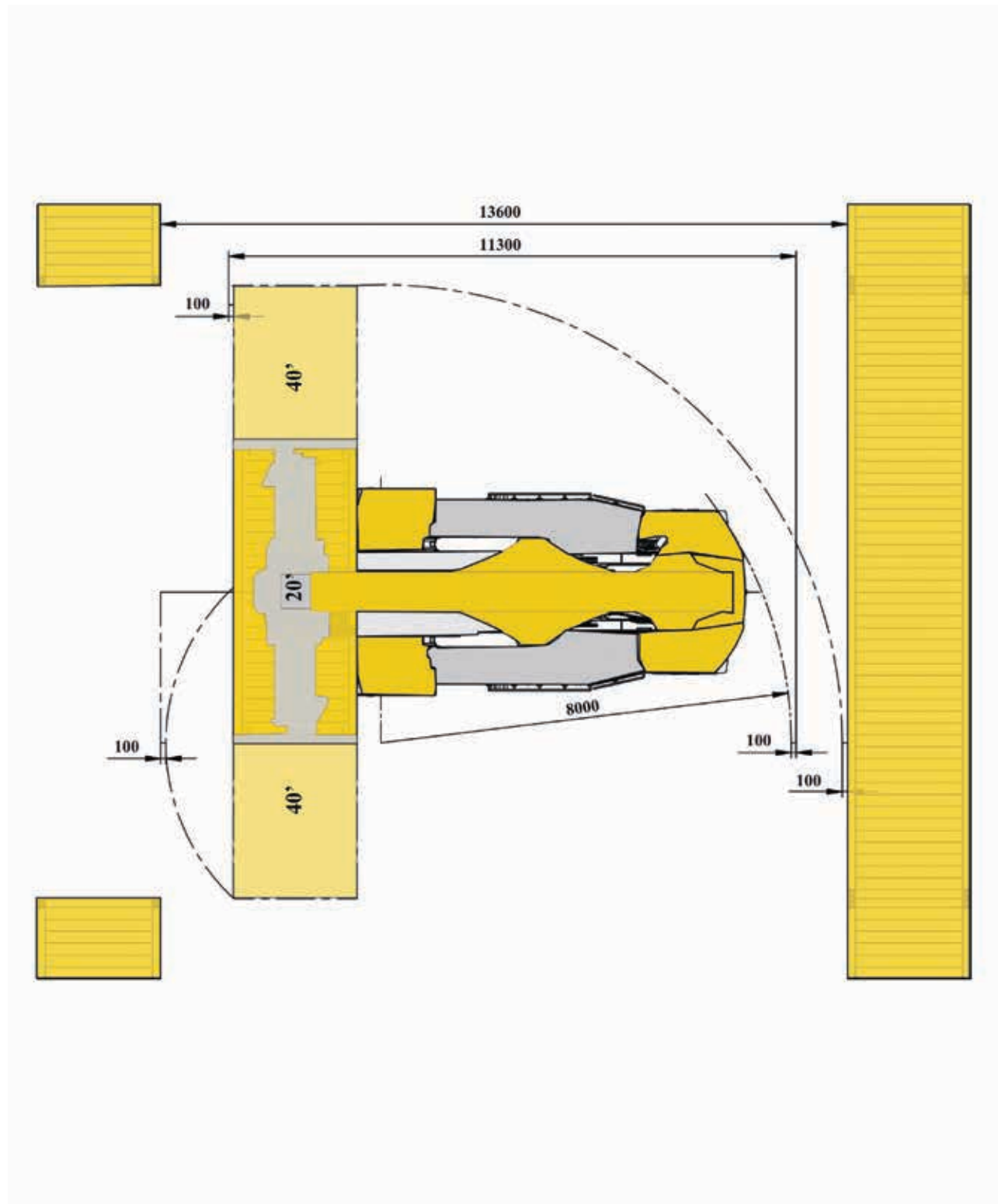
Counterweight B

Weight 3826kg
Qty 1



NOTES: All of these are single piece weight, and boom assembly include boom and telescopic cylinder.

Aisle width



Main Technical Data

| No. | Item | Unit | Parameter | Tolerance | |
|-----|------------------------|-------------|-----------|-----------|------|
| 1 | length | mm | 11340 | ±2% | |
| 2 | Width | Spreader | mm | 6053 | ±2% |
| 3 | | Front wheel | mm | 4200 | ±2% |
| 4 | Height | mm | 4670 | ±2% | |
| 5 | Wheelbase | mm | 6000 | ±1% | |
| 6 | Trace | Front | mm | 3033 | ±1% |
| 7 | | Rear | mm | 2790 | ±1% |
| 8 | Overhang | Front | mm | 840 | ±1% |
| 9 | | Rear | mm | 1194 | ±1% |
| 10 | Min. ground clearance | mm | 350 | ±1% | |
| 11 | Min. turning radius | mm | 8000 | ≤102% | |
| 12 | Max. gradeability | % | 13% | ≥90% | |
| 13 | Dead weight | kg | 71200 | ±3% | |
| 14 | Rated lifting capacity | kg | 45000 | —— | |
| 15 | Stacking capacity | —— | 5-5-4 | —— | |
| 16 | Max. lifting height | mm | 15100 | ±1.5% | |
| 17 | Max. lifting speed | Unloaded | mm/s | 420 | ±10% |
| 18 | | Rated load | mm/s | 250 | ±10% |
| 19 | Max. lowering speed | Unloaded | mm/s | 360 | ±10% |
| 20 | | Rated load | mm/s | 300 | ±10% |
| 21 | Max. traveling speed | Unloaded | km/h | 20 | ±10% |
| 22 | | Rated load | km/h | 14 | ±10% |
| 23 | Aisle width | 20' | mm | 11300 | ±2% |
| 24 | | 40' | mm | 13600 | ±2% |

Main parts list

| No. | Name | Model | Manufacturer |
|-----|------------------------|----------------|---|
| 1 | Spreader (Terminalift) | HNSD450 | SOMCA Heavy Machinery Manufacture Co., Ltd. |
| 2 | Spreader (Bromma) | RSX40 | Sweden Bromma |
| 3 | Drive Axle | D102PL341 | Germany Kessler |
| 4 | Pump | P105 | America Parker |
| 5 | Main valve | M402LS-2-4092B | America Parker |
| 6 | Telescopic cylinder | HNS45_2.16 | SOMCA Heavy Machinery Manufacture Co., Ltd. |
| 7 | Luffing cylinder | HNS45_2.28 | SOMCA Heavy Machinery Manufacture Co., Ltd. |
| 8 | Tire | 18.00-25 | Guizhou Tyre Co., Ltd. |
| 9 | Cab | XCS4531K.03 | Hubei Qixing Cabin Manufacturing Co., Ltd. |
| 10 | Radiator | XCS4531K.48 | AKG Thermal Systems (Taicang) Co., Ltd. |

Notes

1. All information in the brochure is provided for reference only. Never rely on it to operate the machine. Refer to the operation manual for operation instructions of the machine.
2. Container reach stackers are off-road machines. Local traffic rules and regulations must be observed. For long-distance job site transfer, use a trailer and take GVW, axle load and dimensions of the machine into consideration.
3. The machine must be operated on firm ground, which gradient does not exceed 3%.
4. Operation of the machine is only permissible when the wind force is below grade 6. When operating the machine under wind conditions it is necessary to observe wind speed, equipment status and operating environment.



Terminalift, LLC

9444 Mission Park Place, Santee, CA 92071

Ph: (619) 562-0355 F: (619) 562-2060

Email: Zeroemissions@terminalift.com

Office Hours :

Monday – Friday 7:00 am – 3:00 pm PST

TERMINA — TL- RS55E